



wysiwyg ON THE HIGH SEAS

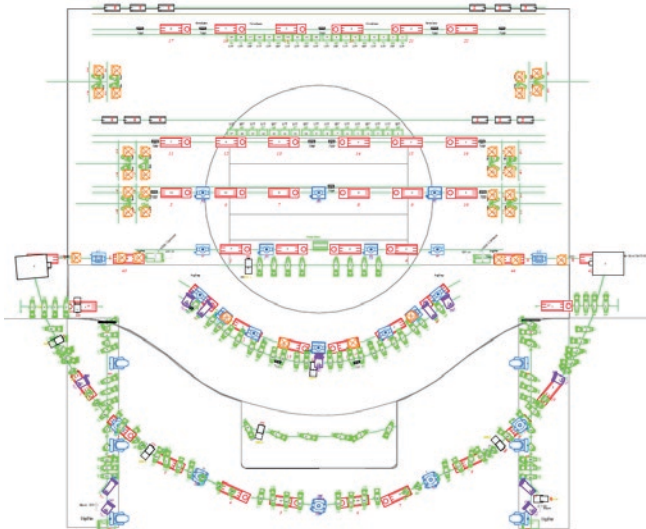
Contributed by Carl Impey, Fleet & Newbuild Lighting Designer for Costa Cruise Lines

Who would have thought of wysiwyg as a ship-building tool? Costa Crociere, Carnival Cruise Line's burgeoning Italian subsidiary, has brought out three "mega" cruise ships in the last eighteen months – an industry first – and wysiwyg was an integral part of the design process with regards to the many entertainment venues on board. These ships host over 2200 passengers per cruise with 17 decks and a length of nearly 1000 feet (295 metres) – more than 3 football fields long!



Carl Impey, Fleet & Newbuild Lighting Designer for Costa Cruise Lines explained, "On each of our fifteen ships we have a 1000+ seat theatre with a level of sophistication that rivals the top percentile of land-based venues. A year before delivery I received full CAD drawings of the area with pipes, trussing, AC, DMX and generic instruments in place. This base skeleton was designed by Jim Tetlow, head of La Jolla-based Nautilus Entertainment Designs, which provides technical interface between Owner and Shipyard for all Carnival vessels. The skeleton is flexible, and using wysiwyg I could then flesh-in intelligent fixtures and effects equipment."

"Now here is where wysiwyg's power comes into play," allowing me to stage virtual shoot-outs between endless configurations and brands of fixtures, to the point where the whole rig is designed, patched, focused and budgeted far enough in advance for the purchasing and building operations to kick in."



Costa Crociere, Carnival Cruise Line's Stage Plot

In phase two, contractors commence the build and hang, most structural, signal, and electrical problems having been solved at the drawing stage.

While Nautilus supervises the install, Impey can hook up the grandMA fullsize to wysiwyg Perform R24 and prepare the console, building palettes and basic looks so that as the system comes online it is immediately ready for programming.

The third phase spans only a matter of a few weeks from receiving an operational lighting rig to opening night. "Without all the prep work done and previsualized in wysiwyg we'd never make it," says Carl, "The first seven days that a ship sails for the first time involves seven different 40-minute shows which are impossible to program live in that time. Some shows are lit completely using wysiwyg, requiring only final tweaks, before the system is ever fired up."

The maiden voyage was a complete success and Costa has already started their next new build, where Impey also plans to use wysiwyg for the theatre, discotheque and 6 smaller venues. He concludes, "I wouldn't think of being without it!"

CONTROL

- ✓ grandMA Fullsize
- ✓ grandMA Ultralite (backup)
- ✓ Arkaos VJ media server

LIGHTING

- ✓ 22 x Cyberlight 2.0
- ✓ 18 x VL2500 Spot
- ✓ 5 x VL3500 Spot
- ✓ 34 x SGM Palco LED wash
- ✓ 98 x CE Source 4 (80 w/ColoramIT scrollers)
- ✓ 16 x CE par64
- ✓ 8 x Wildfire UV with Eclipse dowser
- ✓ 12 x QFX150 fiber-optic illuminator
- ✓ 4 x HB colour laser
- ✓ 4 x DF-50 Hazer
- ✓ 2 x Glaciator low fog generator
- ✓ 8 x Ultratech ProLauncher confetti cannon
- ✓ 12-point custom Le Maitre pyro system
- ✓ Custom LED curtain
- ✓ Barco SLM R12 + projector

